

Bench Top Roll Compactor System

For Developmental Dry Granulation Processes

Maximum Processing Flexibility

- Small Processing Volumes: 5g to 1kg/hr
- No Inserts Required for Processing Range
- Optional Granulating Mill Available

Engineered Scalability

- Constant Compaction Force within Roll Gap
- Roll and Screw Design Consistent to Production TFC Models

Unique Compaction Seal Design

- Contained Compaction Zone for Reducing the Amount of Fines

Inline De-Aeration Design

- Vertical Hopper and Screw De-Aerates Product Prior to Compaction

Quick Changeover Design

- No Tools Required to Disassemble
- Cantilevered Roll Design for Easy Cleaning

Validatable Control System

- Manual Mode of Operation
- Roll Pressure Displaying Compaction Force
- Amperage and Speed Displays for Roll and Screw

Portable Self-Contained System

- Single Electrical Connection



The TFC-LAB Micro is a self-contained and easy-to-operate roll compactor system built for dry granulation processes. Designed for flexible development, the TFC-LAB Micro can compact product samples as low as 5 grams, making it ideal for feasibility studies. With the vertical hopper and screw design, product is de-aerated prior to the compaction zone providing improved processing results. The engineered seals around the compaction zone greatly reduce unwanted fines. Designed to be consistent with production TFC roll compactors, the TFC-LAB Micro is an ideal solution for your developmental dry granulation requirements.

VECTOR CORPORATION

675 44th Street, Marion, IA 52302-3800

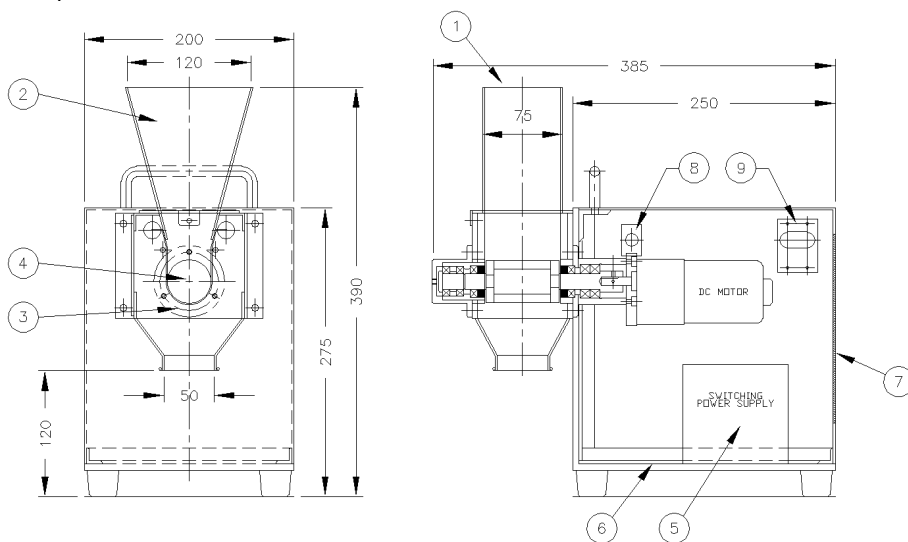
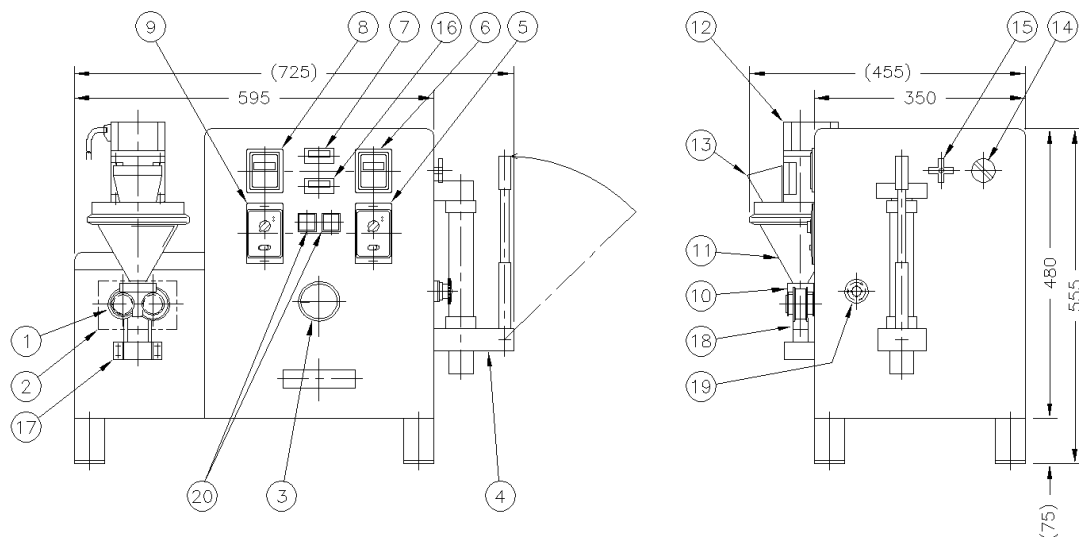
Phone: 319-377-8263 Fax: 319-377-5574

Email: vector.sales@vectorcorporation.com

www.vectorcorporation.com

TFC-LAB Micro

1. Roll
2. Roll Cover
3. Roll Pressure Gauge
4. Hydraulic Pump
5. Screw Switch
6. Screw RPM Meter
7. Roll Amp Meter
8. Roll RPM Meter
9. Roll Switch
10. Top/Side Seal
11. Hopper
12. Screw Motor
13. Charge Port
14. Main Power Supply
15. Roll Pressure Valve
16. Screw Amp Meter
17. Scraper
18. Emergency Stop
19. Work Switch
20. Start/Stop



1. Feeding Opening
2. Hopper
3. Granulator Screen
4. Rotor
5. Control Cabinet
6. Support Base
7. Access Covers
8. Motor On/Off
9. Breaker Switch

NOTES:

1. Dimensions are shown in millimeters.
2. Dimensions shown are design dimensions and are subject to change due to manufacturer's tolerances.

TECHNICAL SPECIFICATIONS

Capacity Range: 5g – 1kg/hr	Electrical Supply : 110 or 220 VAC
Roll Speed: 0.1 – 4 RPM	50/60 Hz, 1 Phase
Maximum Roll Force: 1200 kg	Weight: 65 kg (Approx.)
Roll Dimensions: 24mm x 50mm	Design Standards: CE, UL, NFPA, CSA
Screw Speed: 0-50 RPM	

Providing equipment and processing solutions around the world since 1972, Vector is a subsidiary of Freund Corporation located in Tokyo, Japan. Globally, the Freund/Vector team has thousands of system installations in the pharmaceutical, healthcare, chemical, agricultural, and food industries.

VECTORCORPORATION

675 44th Street, Marion, IA 52302-3800
 Phone: 319-377-8263 Fax: 319-377-5574
 Email: vector.sales@vectorcorporation.com
www.vectorcorporation.com



Your Global Equipment and Processing Solution